

Flourishing Leaders


Jo Heaton, Northern Lights &

Andy Wolfe, Church of England



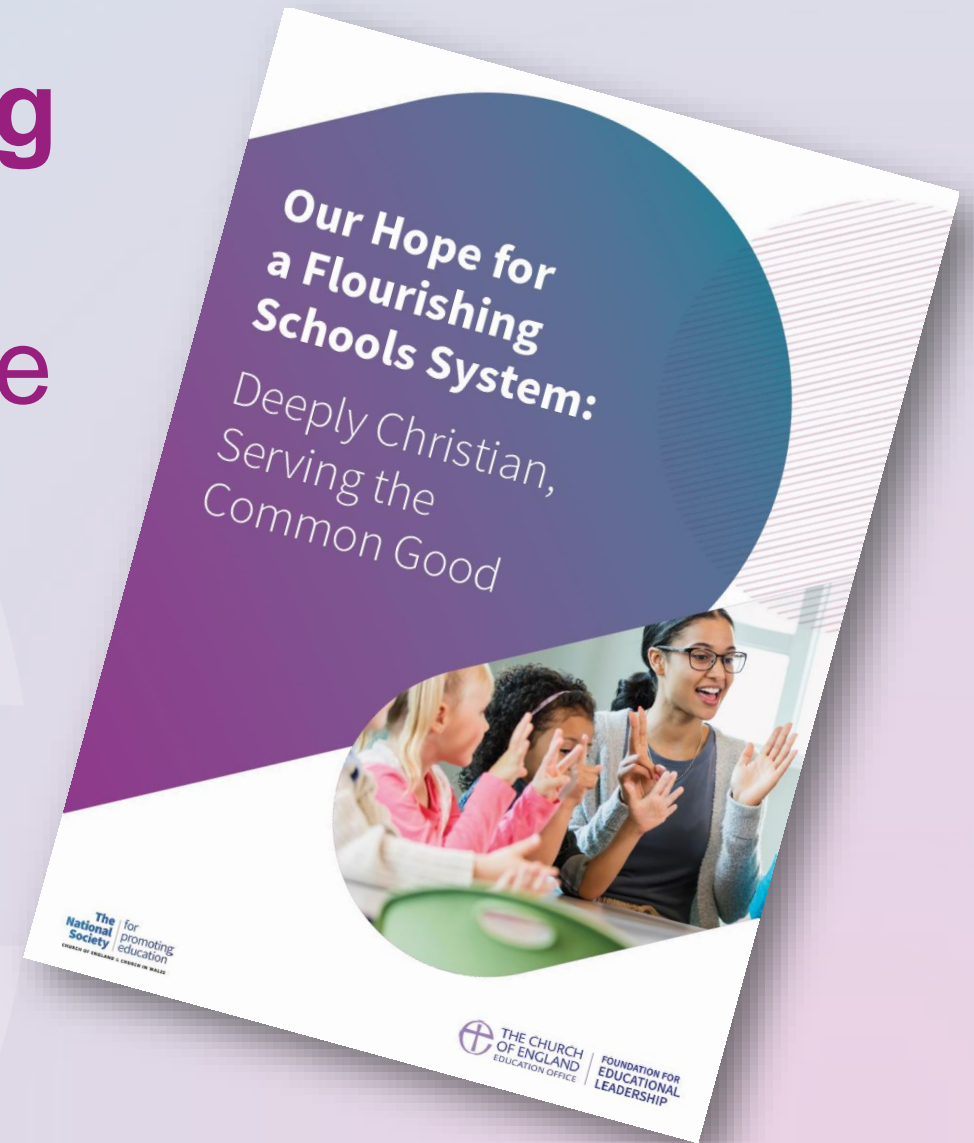
THE CHURCH
OF ENGLAND
EDUCATION OFFICE

FOUNDATION FOR
EDUCATIONAL
LEADERSHIP

A top-down photograph of a white ceramic cup and saucer. A hand with red-painted fingernails is holding the handle of the cup. The cup is empty and has the words "YOU CAN'T POUR FROM AN EMPTY CUP" written in black, hand-painted capital letters inside. The background is a plain, light-colored surface.

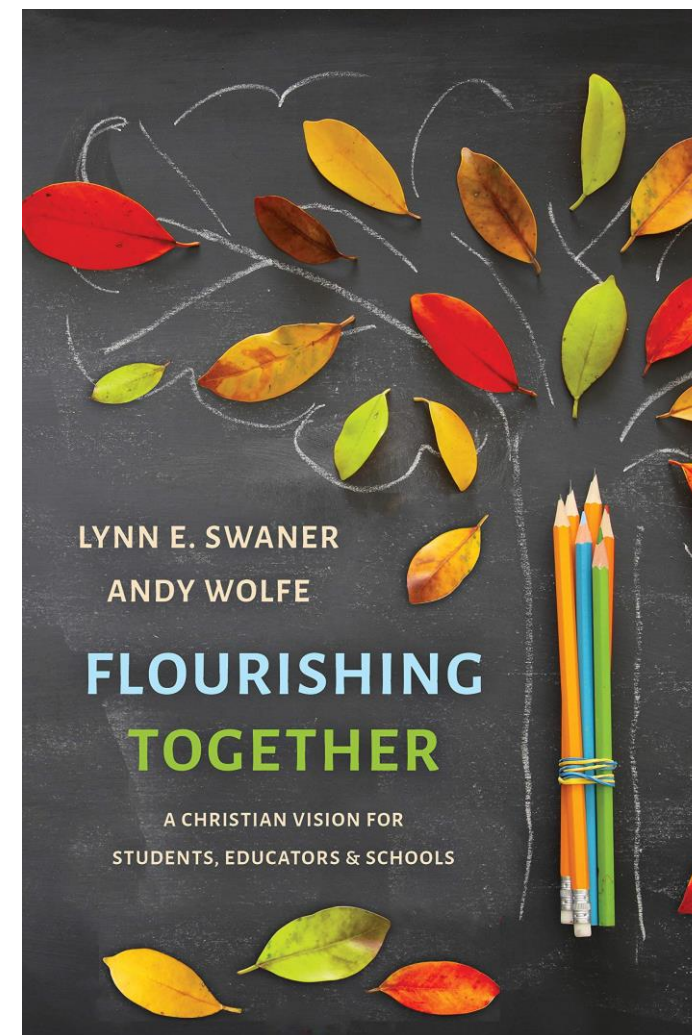
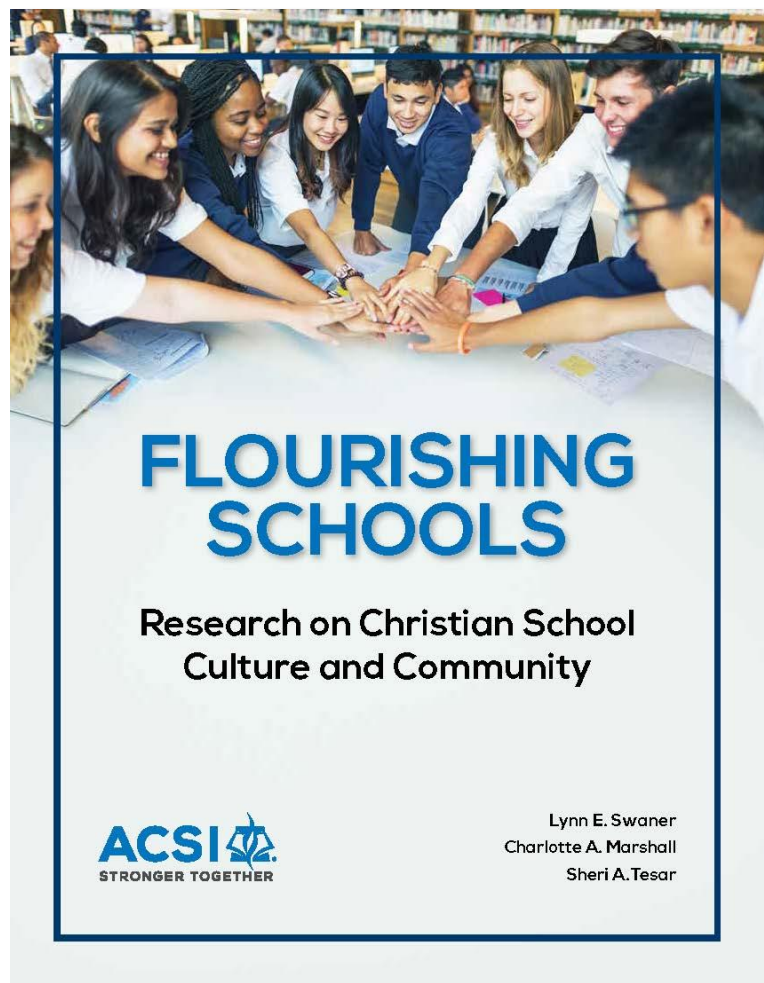
YOU
CAN'T POUR
FROM AN
EMPTY
CUP

Our Hope for a Flourishing Schools System: Deeply Christian Serving the Common Good (2023)

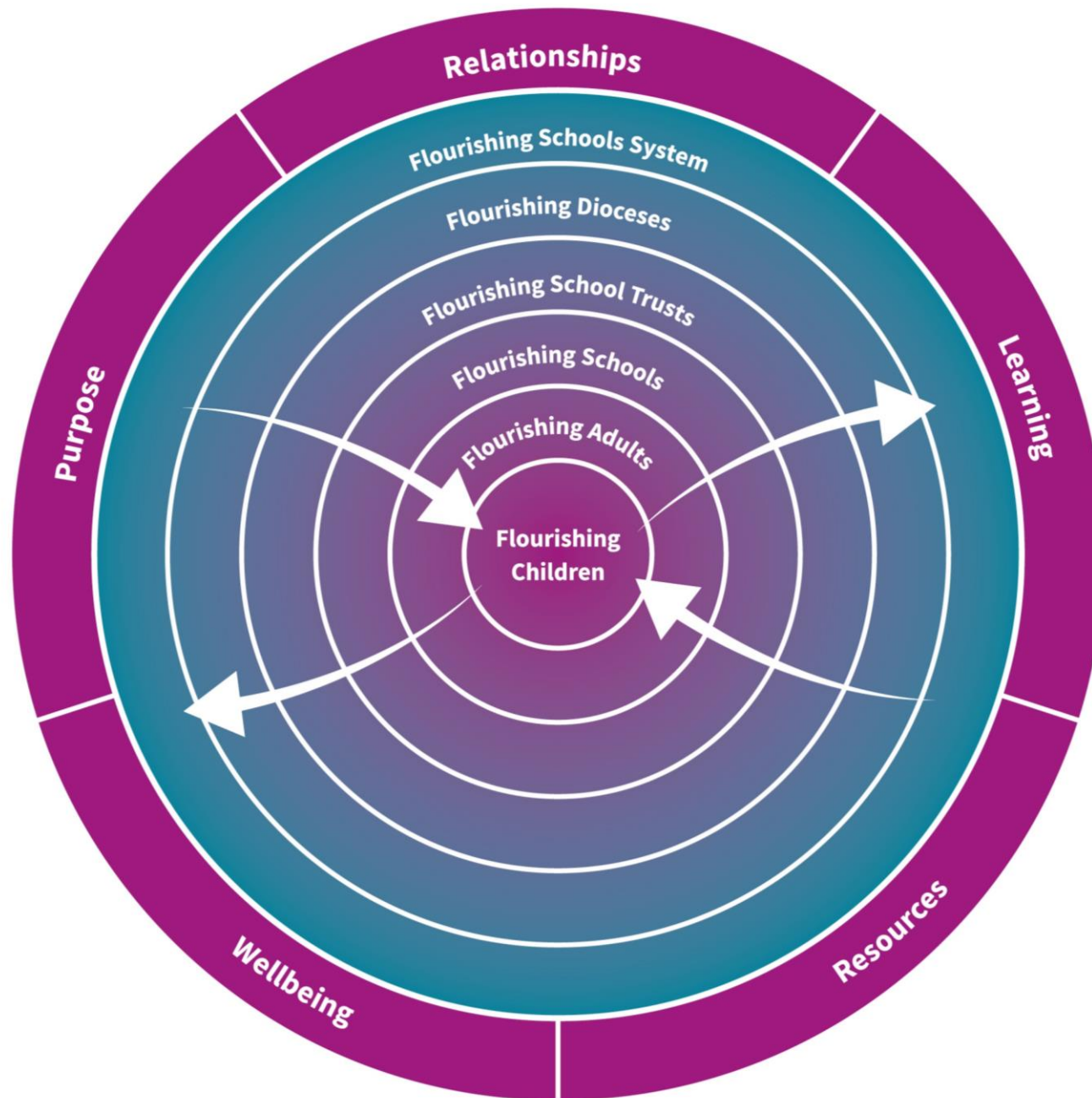


THE CHURCH
OF ENGLAND
EDUCATION OFFICE

FOUNDATION FOR
EDUCATIONAL
LEADERSHIP



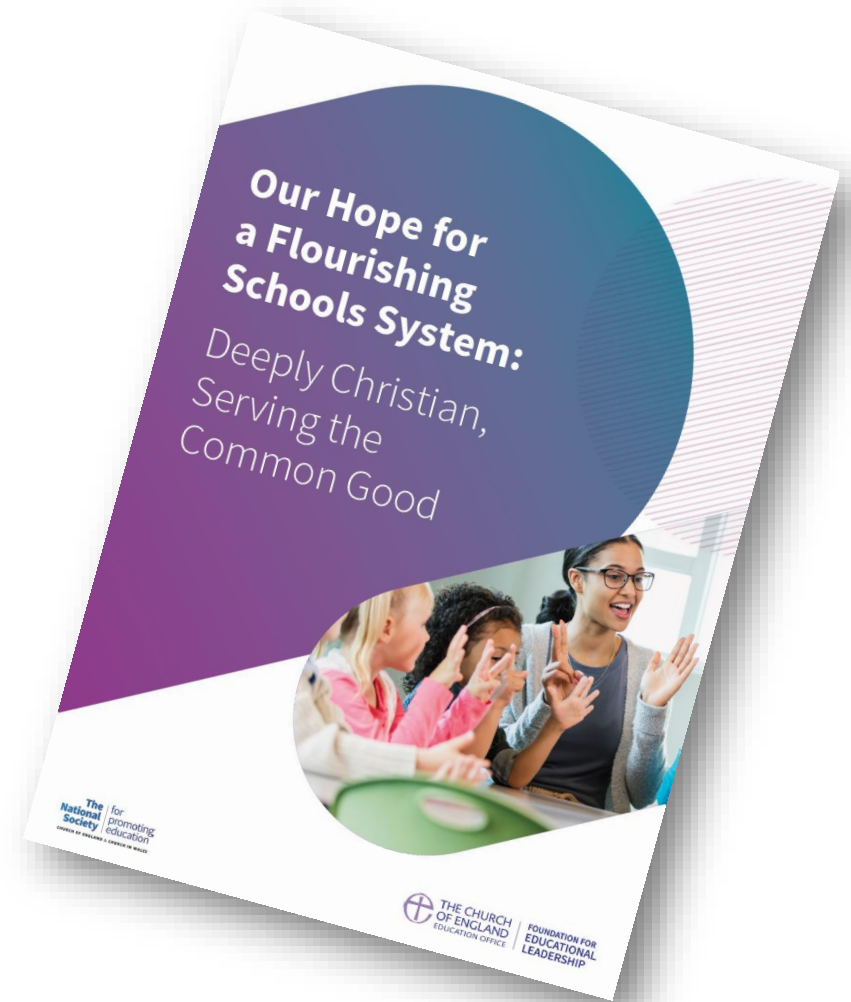
<https://community.acsi.org/flourishingschools/home>



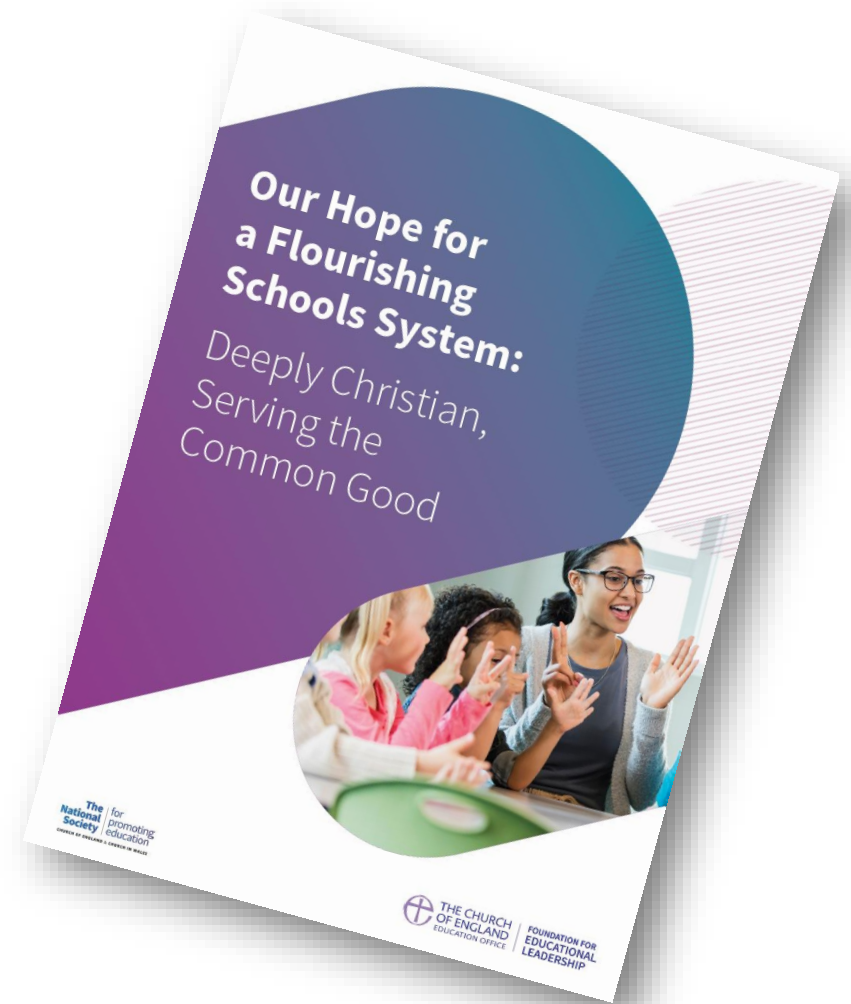
Ecology of Flourishing Leaders

“The education system stands or falls on the extent to which it is **led by adults who are themselves, flourishing.**

Children need to be empowered...by adults who are themselves **well rested, valued, supported, paid and championed by society.”**



“Flourishing schools need both the **instructional, evidence-informed expertise** that leaders need to apply domain-specific knowledge into their roles, but also require the **transformational, vision-based approaches** that draw teams together, set longer-term paths and deepen impact in the communities the school serves.”



NPQ possibilities for Durham & Newcastle for 2023/24

NPQ FLEX

- Delivered in a bespoke group within your organisation (school or MAT)
- Tailor content to your context
- Create the logistics yourself to reduce cover
- Receive support from NLTSH and delivery team

NPQ SMALL

- Aimed at schools with under 150 pupils, who all receive £800 PP bursary
- Fully online, no cover costs
- Curriculum tailored to small schools
- Includes NPQEL programme
- National delivery team connecting you to other small schools

Northern Lights

How Northern Lights can support
flourishing leaders and teachers

SHINING
STRONGER
TOGETHER



Northern
Lights
LEARNING TRUST



Northern
Lights
TEACHING SCHOOL HUB



Northern
Lights
EARLY YEARS HUB NORTH EAST

Northern Lights

- Who are we?
- How do we work in partnership as a Diocese and Church of England MAT, Dfe Teaching School Hub & Dfe Early Years Hub for the North East?
- Why does this matter?
- Strong schools & Trusts can only flourish in partnership with a strong flourishing Diocese



Northern
Lights
LEARNING TRUST



Northern
Lights
TEACHING SCHOOL HUB



Northern
Lights
EARLY YEARS HUB NORTH EAST

Northern Lights

- Our role in this
- ‘flourishing adults are defined by relationships that support and encourage’ (*Our Hope for a flourishing schools system*)
- Role of Church of England NPQs in this



Northern Lights

- As set out in the 'Our Hope for a flourishing schools system' document, the purpose of WHY we are together sets us on our journey – WHY together as a Diocese? Why work together on this NPQ project?

NPQ Flex

- Our flourishing is dependent on our relations – WHO we are with
- Learning – another key principle; our learning through the NPQs and learning together
- WHERE we meet together matters



Northern
Lights
LEARNING TRUST



Northern
Lights
TEACHING SCHOOL HUB



Northern
Lights
EARLY YEARS HUB NORTH EAST

Northern Lights

- *Flourishing school trusts 'will be driven by a relentless pursuit of 'life in all its fullness' for every child and adult, with deep concern for social justice and spiritual leadership at the heart of the Church of England's mission to the nation, through a deeply Christian vision for education that serves the common good.'*



Northern
Lights
LEARNING TRUST



Northern
Lights
TEACHING SCHOOL HUB



Northern
Lights
EARLY YEARS HUB NORTH EAST

NPQ possibilities for Durham & Newcastle for 2023/24

NPQ FLEX

- Delivered in a bespoke group within your organisation (school or MAT)
- Tailor content to your context
- Create the logistics yourself to reduce cover
- Receive support from NLTSH and delivery team

NPQ SMALL

- Aimed at schools with under 150 pupils, who all receive £800 PP bursary
- Fully online, no cover costs
- Curriculum tailored to small schools
- Includes NPQEL programme
- National delivery team connecting you to other small schools